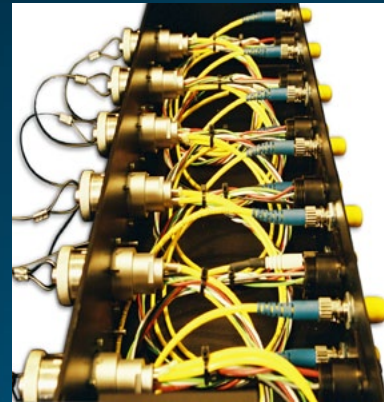


HDTV Fiber Optic Patch Panel Series

Series 1: 2-RU, 12" deep, 6" mid-plane, 6 or 7 position SMPTE Breakout Panel
Series 2: 2-RU 6" deep, rear plane, 45 degree SMPTE Breakout Panel
Series 3: 1-RU 6-position or 2-RU 8-position, 5" backplane, High Density Modular Panel,

- * Available in both modular and fixed designs, either with or without enclosures.
- * Standard configurations available from stock, custom configurations in 2 weeks [typical]

Part No. FOPA-100-7M (7 Position Male) Part No. FOPA-100-6M (6 Position Male)



Neutrik OpticalCON Fiber Optic Interconnect System

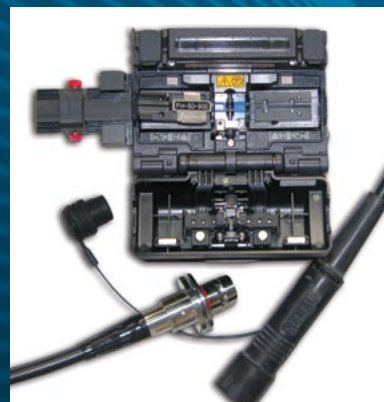
- * Available in 2 (Duo), 4 (Quad), and Hybrid versions
- * Complete modular system-chassis connectors-cable assemblies-breakouts
- * Quickly and easily adapt to any fiber optic connector type
- * Automatic dust protection-Rugged and User friendly
- * Custom Assemblies either with or without reelers
- * SMPTE to OpticalCON adapter cables



Fiber Optic Fusion Splicer For HDTV SMPTE Cable

User friendly, extremely versatile, and cost effective fusion splicing system for use with SMPTE fiber cable as well as almost all standard fiber connector types. Based on the industry leading Fujikura FSM Series, this small, light weight unit is suitable for field or bench use. Custom Nemal adapters and holders make this unit compatible with ST, SC, FC, LC, APC, and other connectors, both single and multi-mode (50-62.5mm). The splicer is microprocessor controlled, provides instantaneous readout of insertion loss, and includes a built-in shrink oven for fiber protection sleeves. Nemal also offers a complete termination kit including precision cleaver, strip tool, and consumables.

- * 15 second typical Splice cycle
- * 5 Automatic modes for NZ, DS, NZDD, SM, and MM fibers (125m cladding)
- * Battery or AC powered
- * 0.02db nominal splice loss MM, 0.05 SM
- * Rugged field carrying case
- * USB Terminal for data download



CALL NEMAL for all of your HD Fiber needs including Termination Tooling, Consumables, Patch Cords, and Test Equipment.

United States: Tel (305) 899-0900
info@nemal.com
www.nemal.com

Brasil: Tel (11) 5535-2368
vendas@nemal.com.br
www.nemal.com.br



SMPTE Fiber Field Test Set

Ruggedized SMPTE Test Set is designed for harsh work conditions where handheld units are not appropriate. The SMPTE Test Set utilizes a remote loopback unit for single ended testing of both optical fibers as well as power for the built-in copper conductor tests. The set checks all 4 copper conductors for continuity and shorts as well as verifying the integrity of the grounding shield in the cable with simple pass/fail audible and visual indicators. The main control unit houses the optical fiber power meter readout, copper conductor test indicators, and the SMPTE fixed plug connector. The Remote Unit contains the SMPTE fixed socket connector.

- * Single test checks both fibers for loss and all 4 copper conductors for continuity, short circuits and ground braid integrity
- * Simple audible and visual pass/fail indicators for copper tests
- * Designed for harsh environments in ruggedized housing
- * Rechargeable NiMH batteries
- * Dual single-mode capabilities, 1310nm & 1550nm wavelengths



HDTV Fiber Optic Pigtails

As part of a complete HDTV camera system, the pigtail design allows for ease of installation and maintenance by quickly adapting the hybrid cable to industry standard connectors. The pigtails are also available with custom lead lengths, and as part of a complete panel.

FEATURES - Part Numbers: FO-PTP (Plug) and FO-PTJ (Jack)

- * Substantially reduces on-site installation time and equipment requirements
- * Facilitates maintenance/replacement of SMPTE standard HDTV Connectors
- * 18" lead length to 2-ST and 1-CPC multi-pin connector (other connector types on request)
- * Available in plug (P) or jack(J) versions
- * Available in different mounting configurations



HDTV SMPTE Camera Connector To ST Adapter

A rugged and economical solution for field or studio applications requiring use of existing standard fiber cable with the SMPTE Hybrid HDTV Camera Connector. Also use to interconnect equipment with standard ST connectors in locations where only SMPTE Hybrid connectors are available. Available in male and female versions. Active versions allow for use of remote power with Sony or Ikegami cameras.

- * Extremely durable and compact machined body, "D" flat to prevent rolling
- * Recessed housing to protect fiber connectors
- * Passive versions: (direct fiber interface from SMPTE connector to 2-ST connectors)

P/N FOA-1F Female

P/N FOA-1M Male

- * Active versions: (include circuitry to interface with Camera CCU)

P/N FOA-1FA

P/N FOA-1MA



SMPTE Camera Cable Quick Field Repair Kit

The SMPTE Splice Restoration Kit is specifically designed for repairing SMPTE cables. The Kit includes fiber optic mechanical splices, adapters and wire nuts, all housed in a rugged, impact resistant polymer housing. The two cable entry points have rubber gaskets that seal against moisture. The screw-down lid design further ensures a tight seal.

- * 15 Minute typical repair time
- * Splice box suitable for all standard fiber cables
- * Splices available for most fiber connector types



Active Equipment-Advanced Fiber Products-Emerson-Stratos

- * Media Converters-Fiber to BNC
- * HD/ SDI and 3G versions
- * AC or battery powered
- * Field type or complete Rack Mount System
- * Distribution Amplifiers
- * DVI Extenders-up to 1500 meters
- * Multiplexers- 3G/HD/SD Video, Audio, Telephone, VOIP, Ethernet, and data via single-mode fiber.



Tactical Fiber Assemblies

- * Fully Deployable for Broadcast Applications
- * High Crush Resistant Polyurethane Jacket
- * Light Weight
- * Fiber Counts 2 thru 36 Strand
- * Offered in Distribution & Breakout Styles- Single Mode & Multi-Mode
- * Connectors Offered ST-SC-LC-FC-Optical Con-TFOCALI-Expanded Beam
- * Assembled on Metal or Light-Weight Durable Rubber Cable Reels



SMPTE Cable Cleaning Kit

P/N SMCKIT

This cleaning kit is ideal for both mobile units and studio applications. Use this kit to clean your LEMO and standard fiber optic connectors and be sure that you have a contaminant-free endface. The following items are included with this kit in a black zip-close bag.

- QBE Cleaning System
- Electro-Wash PX Fiber Optic Cleaner (ES810)
- 2.5mm Fiber Optic Swabs (48042F)
- 2.0mm Fiber Optic Swabs
- Lint Free Precision Wipes (6704F)
- Electro-Wash MX Pre-saturated Wipes (CP421)
- Lemo Alignment Tool (OPTIONAL-Order P/N SMCKIT-LAT)



SMPTE Camera Cable

- * Flexible, Rugged Nema1 design, 4 versions available
- * Fully compliant with SMPTE-311 Requirements
- * Terminated to your specifications with protective boot and cap or on bulk reels
- * Available in custom colors

Components: 2-Single mode (9/125) high strength fibers (blue, yellow)
 4-20 AWG insulated, stranded tinned copper conductors (black, white)
 2-24 AWG insulated, stranded tinned copper conductors (red, grey)
 Tinned copper braid
 Outer jacket, 9.2mm

Standard Flexible Version
 Riser rated Version

P/N FOCC24
 P/N FOCC24R

Direct Burial Version
 Harsh Environment Version

P/N FOCC24DB
 P/N FOCC24PUR

