

CALL NEMAL for all of your HD Fiber needs including Termination Tooling, Consumables, Patch Cords, and Test Equipment.

United States: Tel (305) 899-0900
info@nemal.com
www.nemal.com

Brasil: Tel (11) 5535-2368
vendas@nemal.com.br
www.nemal.com.br

NEMAL



CABLE & CONNECTORS
FOR THE ELECTRONICS INDUSTRY

FOUR SERIES AVAILABLE- 19" RACK MOUNT

SERIES 1	2 RACK UNIT, 6 OR 7 POSITION, 12" DEEP, 6" MIDPLANE SPLICE SMPTE BREAKOUT PANEL
SERIES 2	2 RACK UNIT, 6 POSITION, 6" DEEP, REAR PLANE SPLICE, 45 DEGREE SMPTE BREAKOUT PANEL
SERIES 3	1 RACK UNIT, (6 POSITION) OR 2 RACK UNIT (12 POSITION) HIGH DENSITY MODULAR PANEL
SERIES 4	2 RACK UNIT, 6 OR 7 POSITION, 45 DEGREE BLANK PANEL FOR TRUCK I/O AND STUDIO BSP

- * Modular or Fixed versions
- * Available with or without full enclosure
- * Standard configurations available from stock
- * Available blank, fully loaded, or partially loaded with blank covers
- * We design and manufacture custom variations of these panels to meet your requirements



SERIES 1 (FOPA-100)

2 Rack Unit, enclosed mid plane breakout panel (internal splice)

Part Number System for Series 1 and 2

FOPA - XXX (Series) - X (number of positions)-X (gender of SMPTE) - XX (fiber connector type) - X (type of electrical connector)

Series

100

200

Number of Positions

6

7

Gender of SMPTE connectors

M - All positions male

F - All positions female

C - mixed (specify quantity of each)

Fiber Connector Type

ST

SC

LC

FC

FS - no fiber connector - tails out for fusion splicing

Type of Electrical Connector

M - Molex

C - Tyco CPC



SMPTE HDTV FIBER INTERCONNECT PANELS

SERIES 2 (FOPA-200) 2 Rack Unit, 6 Position, 45 degree, enclosed SMPTE Breakout Panel
 (Rear Plane for external splicing) *see Part Number System for Series 1



SERIES 3 (FOPA-300), 1 or 2 Rack Unit, High Density enclosed Modular Panel
 Exclusive NEMAL design for maximum flexibility and density - up to 12 positions in 2 - RU

Modules for SMPTE hybrid connectors, Triax, and Neutrik OpticalCON - Interchange, add or delete modules as needed. 2 Rack Unit models available in 45 degree

Part Number System for Frame FOPA300-X (Height)

Size 1:1 Rack Unit 2:2 Rack Unit

Part Number System for Modules

FOPA - XXX (connector type) - XX (rear fiber connector)

Connector type	Rear Fiber Connector
301 - SMPTE PLUG	ST
302 - SMPTE JACK	SC
303 - TRIAX PLUG	LC
304 - TRIAX JACK	FC
305 - OPTICALCON DUO	
306 - BLANK COVER	

[1 Rack Unit]



[2 Rack Unit]

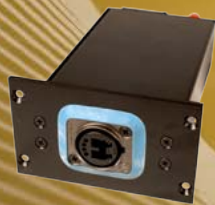


[Mod - FMW]

[Mod - DPT]

[Mod - TRX]

[Mod - PHW]



SERIES 4 (FOPA-400) 2 Rack Unit, 6 or 7 position, 45 degree Blank Panel

Available fully loaded with pigtails or terminated cables.

Part Number System FOPA - 400 - X (number of positions)

